



# Printers Connectivity Guide

AJ 140/160/180  
400Ji/600Ji/800Ji



## Table of Contents

SECTION 1 – <i>Machine Setup</i> .....	3
SECTION 2 – <i>Port Setup</i> .....	7
USB.....	7
Ethernet (Wired).....	7
WIFI (Wireless).....	8
SECTION 3 – <i>Printer Driver</i> .....	11
Tips & Troubleshooting.....	14
USB.....	15
Wired/WIFI.....	15

## SECTION 1 – Machine Setup

You'll need the following:

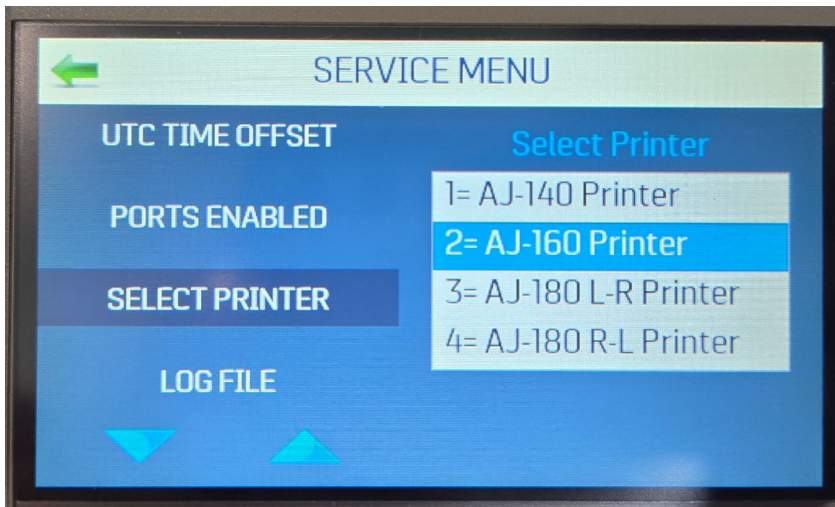
- Administrator rights to the PC – printer driver & software require admin rights to install
- Port type – how will the PC “connect” to the printer? USB, Wi-Fi, ethernet – static or DHCP Network?
  - PC & printer must be on the same network; first 3 octets of the IP address must match
  - PC & printer must have the same subnet mask
  - Do you need to contact IT to get a static IP address for the printer?
  - Do you need the MAC address of the printer?

1. Power ON the printer.
2. Verify that only the port (or ports) you need are enabled in Service Mode. The printer should have left manufacturing with ALL ports enabled.
  - Press & hold all four black buttons at the same time and continue holding for 3-4 secs. If SERVICE MENU does not appear, repeat the press & hold sequence until it does.
  - Use the arrow keys to scroll to and select the option that reads “PORTS ENABLED”.



- Change the Port(s) In Use to include the only the port(s) you need.
  - Tap to enable the port you need. *It's best to leave any unused ports disabled.*
3. Verify the printer is set to the printer model expected by using the arrows to choose Select Printer. The printer should have been shipped with the correct printer model selected. However, if you are replacing the SD card or updating firmware, you may need to set the printer model again.
    - If the model number is correct, tap the back arrow in the upper left-hand corner of the screen to exit Service Mode and skip to Step 5.

- If the Model Name does not match the model number you expect, change via Service Mode.
  - 1= AJ-140 or 400Ji Printer
  - 2= AJ-160 or 600Ji Printer
  - 3= AJ-180 L-R or 800Ji Printer
  - 4= AJ-180 R-L Printer
- Use the arrow keys to scroll to and select the option that reads “Select Printer”.

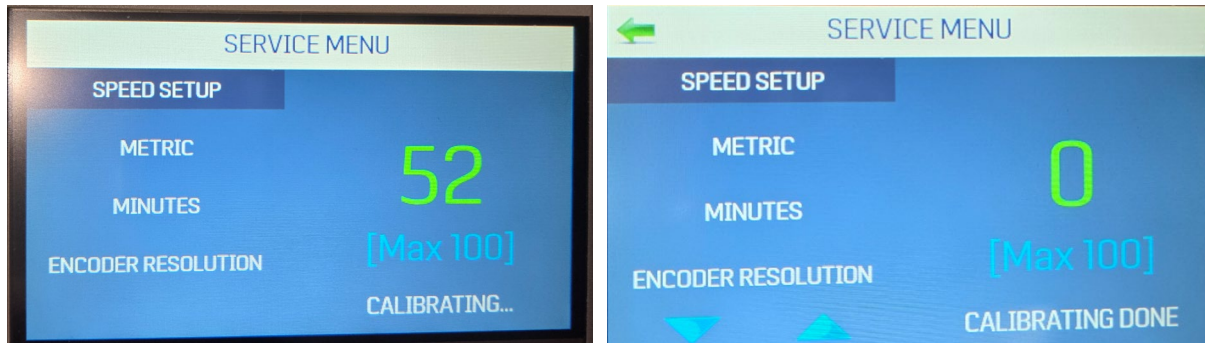


- Tap the dropdown & select the model number that matches your printer.
- Use the arrow keys to scroll to and select the option that reads “SPEED SETUP”.

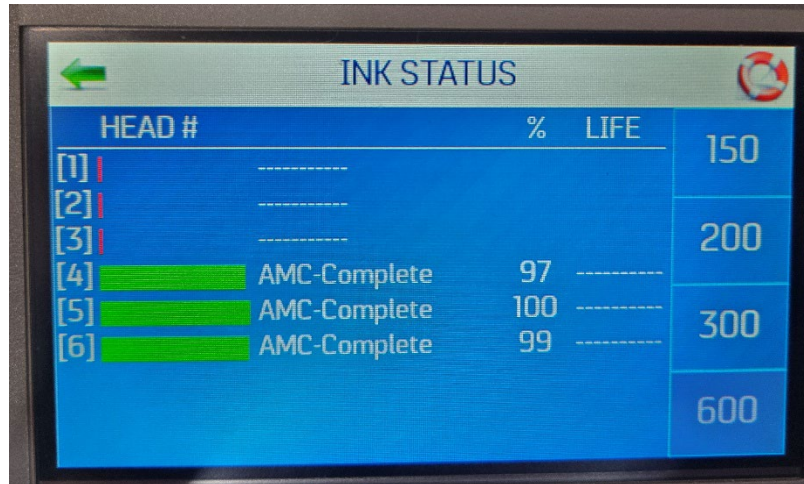


- Tap START TRANSPORT (left image above) ... engine will ramp up.
  - Max speed on AJ-140/400Ji is 80 ips.
  - Max speed on AJ-160/600Ji/AJ-180/800Ji is 95 ips.
  - If the engine exceeds the max speed, SETUP SPEED will be disabled.

- Tap SPEED SETUP (right image) ... message will read “CALIBRATING”, engine will slowly ramp down to zero, then message will read “CALIBRATING DONE” when setup is complete.



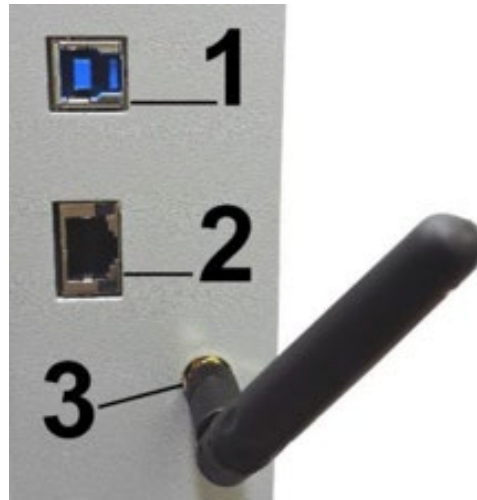
- Tap the back arrow (top left) to exit Service Mode.
  - Perform a Restart or (Shutdown, power OFF/ON) before using the printer.
  - After it powers UP, tap **Information** on the MAIN MENU screen and verify Model Number reflects the model change.
5. Verify proper inks are installed.
- Install ink cartridges in all print heads.
    - It is possible to complete the connectivity portion of the installation without ink. Test prints can be run to prove successful sending of a print job even without ink installed.
  - Tap **Tools > Ink Status** to access the INK STATUS screen.
    - Left to right: For each cartridge, it displays the amount of ink left (% bar), the type of ink installed, the amount of ink left (%), the number of prints remaining at the selected resolution. **NOTE: The printer does not read the ink level. The percentage is calculated based on the number of prints performed by this ink on THIS printer.**



- If ink type reads “-----”, either no ink cartridge is present, or an unrecognized ink has been installed. If the ink type reads “?????????”, the ink cartridge has not been programmed for this printer.
- Tap the back arrow twice to get to the MAIN MENU screen.
- Tap **Test Print**, then **Print** to print a test page. Verify all the print heads are printing.
  - Clean print heads, if needed.
  - Adjust offsets to fine tune horizontal positioning (Horizontal Alignment), if needed.
  - Disable top nozzles to remove vertical overlaps (Vertical Alignment), if needed.
  - Run another Test Print to verify corrections.

## SECTION 2 – Port Setup

All printer models support USB, ethernet (DHCP & static) and Wireless (DHCP) connections.



### USB

1. Plug USB cable into the USB connector (1 in pic) on the printer. USB cable used to connect the printer to the computer should not exceed 6 feet.
2. Plug the other end of the USB cable into the computer.

### Ethernet (Wired)

1. Plug the ethernet cable into the ethernet connector (2 in pic) on the printer.
2. Tap **Tools > Network** to access the NETWORK SETTINGS menu.



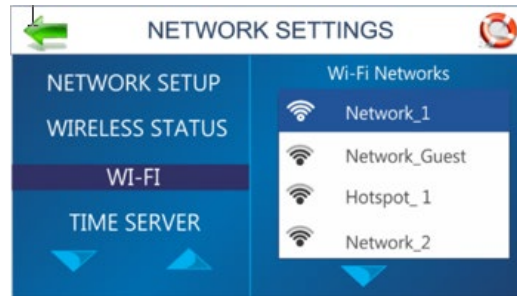
3. If you want DHCP, make sure **DHCP** is checked and tap **Refresh**.



4. If you want static IP, make sure **DHCP** is unchecked. Enter the Printer Name, IP, Subnet, Gateway, DNS #1, DNS #2, as needed. ... [Do you need the MAC address? See step 8.](#)
5. Note the IP & Subnet values. Any computer that will print to this printer MUST be on the same network.
  - First three octets of the IP address MUST match  
10.0.0.56 and 10.0.0.33 – match! 10.0.0.56 and 10.0.1.33 – no match!
  - Subnets must match (e.g. 255.255.255.0)
6. Tap the back arrow to exit NETWORK SETTINGS.
7. Perform a **Restart** (or **Shutdown**, power OFF/ON), if you've made any network changes.
8. If you need the MAC address, you can get it via Service Mode.
  - Press the Power OFF/Restart (lower left black) button located next to the control panel.
  - Press & hold all four black buttons at the same time and hold for 3-4 secs. If SERVICE MENU does not appear, repeat the press & hold sequence until it does.
  - Use the arrow keys to scroll to and select the option that reads "PORTS ENABLED".
  - MAC address is listed under the Wired and Wireless options. The MACs may also be listed on a label outside the printer.
  - Tap the back arrow to exit Service Mode.

#### WIFI (Wireless)

1. Connect the WIFI antenna to the WIFI port (3 in pic) on the printer.
2. Tap Tools > Network to access the NETWORK SETTINGS menu.
3. Tap WI-FI to get list of available WIFI networks.



4. Tap target network from the list.



5. Tap textbox, enter password, tap Enter key to return to the Sign In screen.

6. Tap **OK**.



7. If the password is incorrect (left image), tap TRY AGAIN, verify you're still pointing to the target network, and the password is correct and tap OK. ...

YES - sometimes a bad password changes the target network!?

8. If the password is correct (right image), you are WIFI connected.

9. Tap WIRELESS STATUS to display network settings.



10. Note the IP & Subnet values. Any computer that will print to this printer MUST be on the same network.
  - First three octets of the IP address MUST match  
 10.0.0.56 and 10.0.0.33 – match! 10.0.0.56 and 10.0.1.33 – no match!
  - Subnets must match (e.g. 255.255.255.0)
11. Tap the back arrow to exit NETWORK SETTINGS.
12. Perform a **Restart** (or **Shutdown**, power OFF/ON), if you've made any network changes.

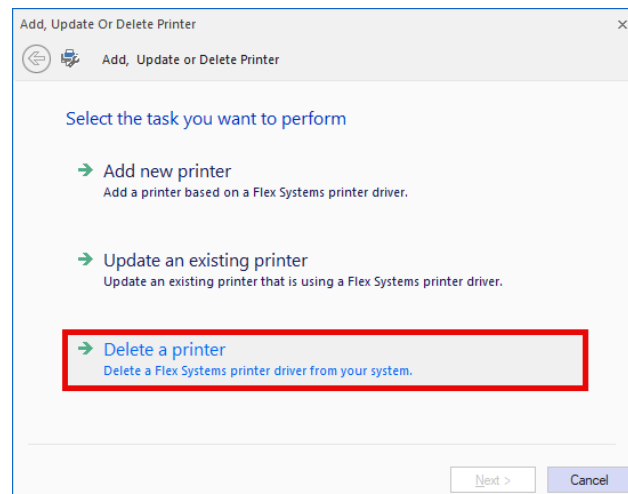
## SECTION 3 – Printer Driver

### **Install Printer Driver**

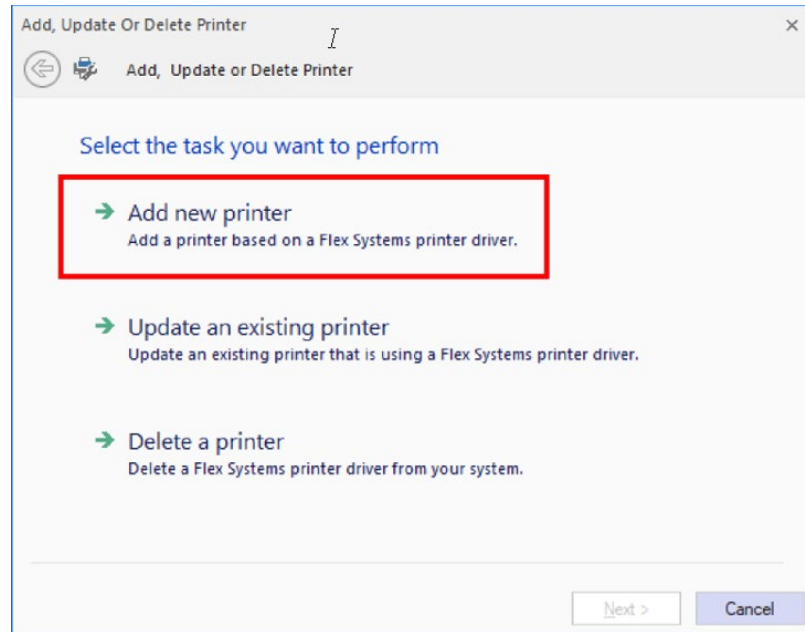
Download the latest printer driver from the ClubRED website. Make sure the cable(s) are connected to your computer and to the printer, if applicable, and that the printer is turned on.

- If your network requires a static IP address, see **Port Setup > Ethernet**.
- If you wish to use WIFI, see **Port Setup > Wireless**.

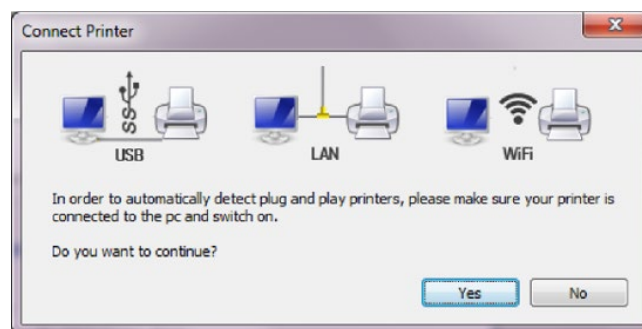
1. Right-click **Setup.exe** and select **Run as administrator**.
2. Click **Add new printer**, then Next on the “**Add, Update or Delete Printer**” screen.
3. Choose **Delete a printer** if it will allow you to and **Repeat** until no printers show up in the drop-down menu. If **delete a printer** will not highlight, then click on **Add new printer** in Step 6.



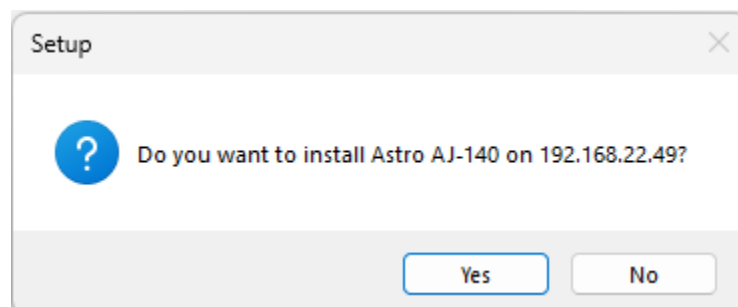
4. Close the Installer and reboot your computer.
5. Right-click **Setup.exe** and select **Run as administrator**.
6. Click **Add new printer**, then Next on the “**Add, Update or Delete Printer**” screen.



7. Make sure the printer is plugged in and switched on and connected by USB to your computer or that both the computer and printer are using the same network. Click **Yes** on the "**Connect Printer**" screen.



8. If the correct port is shown on the "**Do you want to install AJ...**" prompt, click **Yes**.

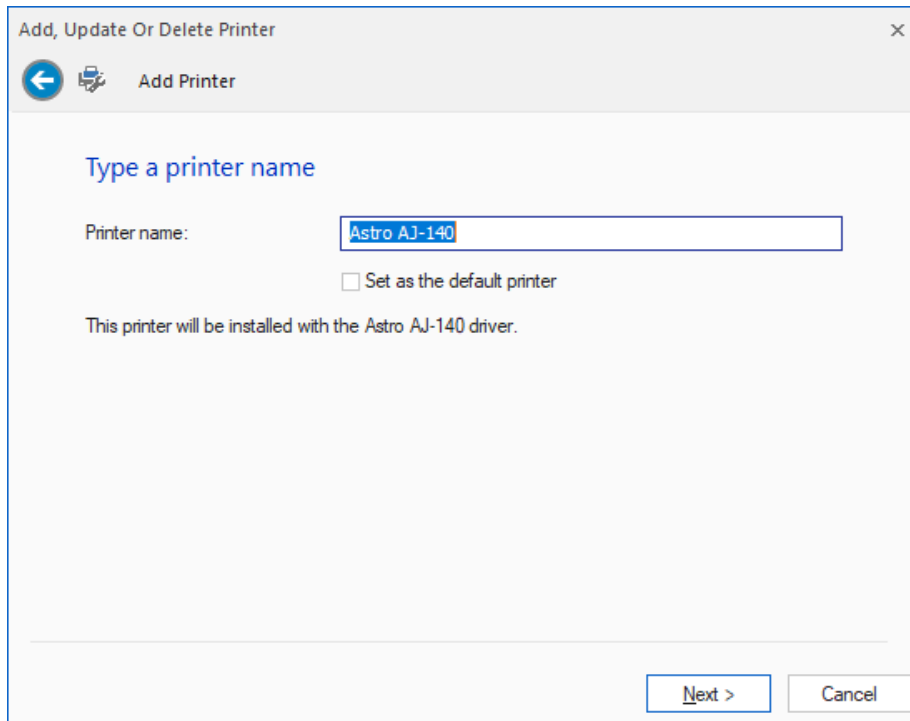


Otherwise, click **No** until the printer port is detected. If the expected port is not shown, exit the installer, verify your settings and run the printer driver again. NOTE - Wired and

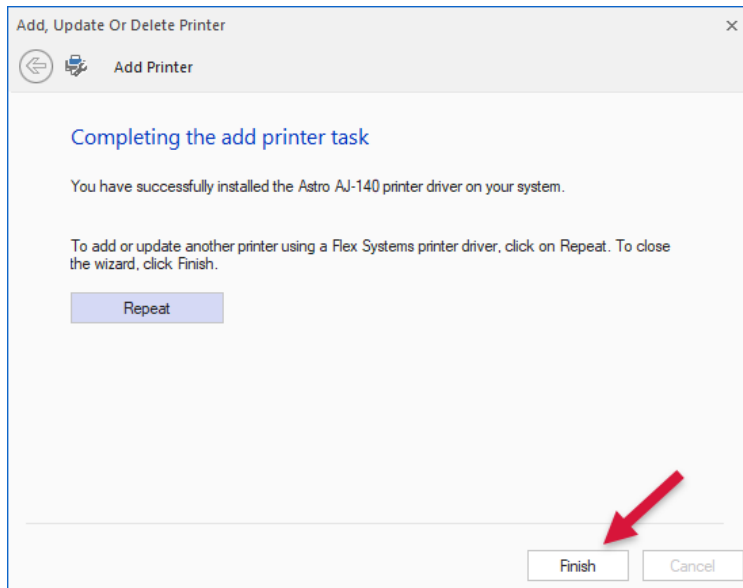
WiFi connections will NOT be detected unless both the computer and printer are on the same network;

- First three octets of the IP address MUST match  
 10.0.0.56 and 10.0.0.33 – match! 10.0.0.56 and 10.0.1.33 – no match!
- Subnets must match (e.g. 255.255.255.0)

9. Click **Next** on the “**Type a printer name**” screen to install the driver. We recommend that you do not change the name provided.



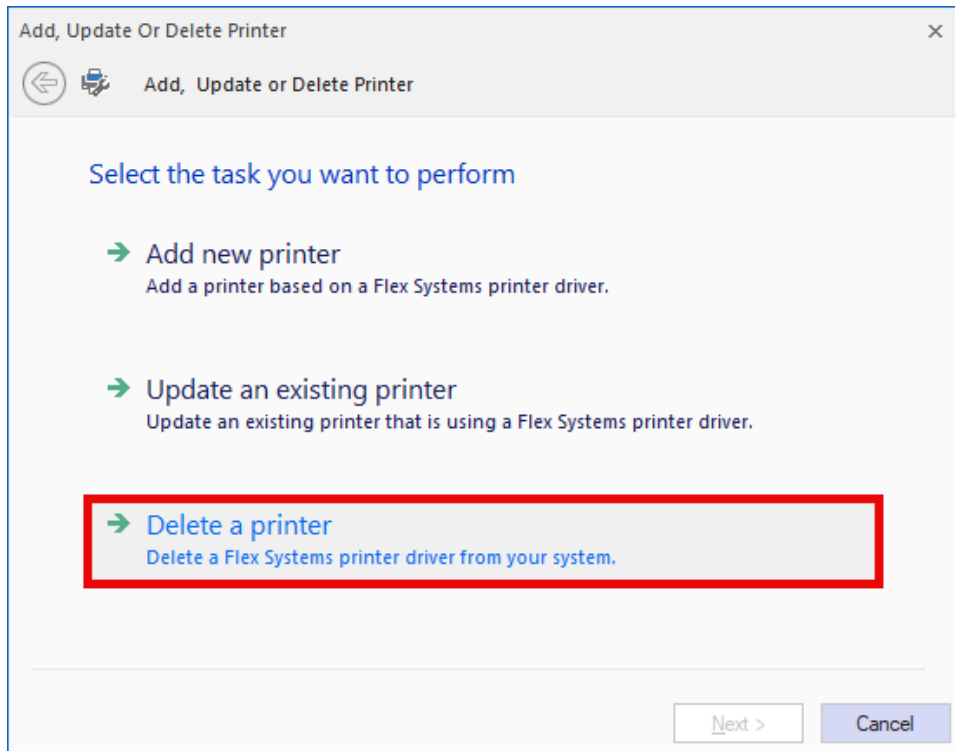
10. Click **Finish** to complete the installation.



11. Verify file printing occurs using a PDF or Notepad.

## Tips & Troubleshooting

- You should be able to ping the printer's IP address from the computer. Keep in mind that a reply does not mean you will be able to print to the printer BUT NO reply does mean the print job will not get to the printer.
- If you need to install more than one AJ Series printer or port on the computer and the installer has trouble detecting ALL the ports available, temporarily unplug USB or network cable associated with the port you have already installed (or will install later). In other words, install with only ONE port connected at a time.
- If the port changes ... for example, 1) port was Wired, now the port is USB, or 2) IP address changed ... updating the port in on the printer's Properties page will not work. You must remove the printer – option Delete a printer on the printer driver installer (setup.exe), preferably BEFORE you install the driver for the new port.
- Need to remove a printer? Do NOT use the Remove device option from Devices & Printers page. You must use the printer driver installer to ADD and REMOVE printers.



## USB

- Make sure you plug the USB cable into the same port used on the computer when it was installed.

## Wired/WIFI

- Launch the Printer Update Utility. Select option Ethernet & click Search for Printers to verify it can detect the wired printer.
- Type `arp -a` from the command prompt with admin rights to view address resolution protocols; `arp -d` will clean up the list.