



AstroJet 300P-500P Quick Start Guide



Step 1

Unpack Printer and Accessories

Place Printer on a stable surface. Attach Side Media Guides [1] and Rear Media Guide [2] with included hardware. Save packaging material.

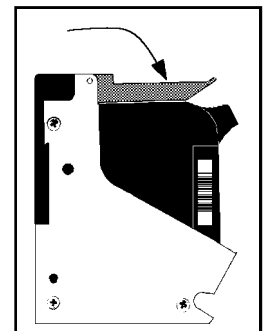
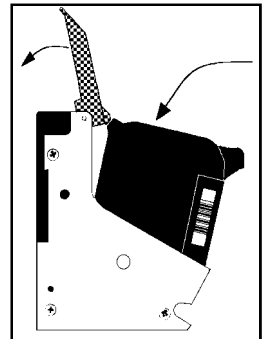


Step 2

Install 3 Inkjet Cartridges

Open Top Cover.

1. Remove inkjet cartridge from packaging. **DO NOT** touch copper contacts, metal plate, or gold printhead. Remove protective tape from printhead.
2. Open latch levers on inkjet cartridge holders.
3. With cartridge printhead pointing down, slide cartridge into holder, push down and toward contacts in holder.
4. Make sure cartridge is seated in holder. Close latch lever to secure cartridge. **DO NOT force lever into place.**
5. Repeat **Steps 1-4** for remaining cartridges.



Ink in cartridge may be harmful if swallowed. Keep new and used cartridges out of reach of children. Discard empty cartridges immediately.

Step 3

Connect Power to Printer

1. Main power switch is turned OFF.
2. Connect power cord to Printer receptacle.
3. Plug other end into 115-220 Volt AC, 50/60 Hz. grounded outlet.



DO NOT TURN POWER SWITCH ON YET

Step 4

Connect Printer to Computer

Printer has both USB and Parallel Ports.
(Located on Side Cover as shown.)

1. **USB Cable Users:**
Plug USB cable from computer into Printer's USB port.
2. **Parallel Cable Users:** Plug Parallel Printer Cable from computer into Printer's Parallel Port. Latch two locking clips.



Step 5

Set up Feed

Printer has four Sheet Separators, two Side Guides and Back Media Guide.

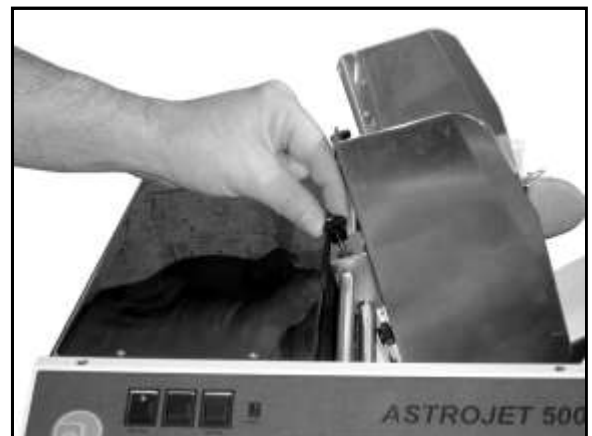


Adjust Sheet Separators:

1. Move Side Guides so Separator locking screws are accessible.
2. Loosen locking screw, raise Separator, then tighten locking screw.
(Holds Separator in raised position.)
3. Place media under Separators. **NOTE:** Place media in center position for best results.
4. Loosen Separator locking screw. Lower Separator onto media and tighten locking screw. Repeat for each Separator with media under it.

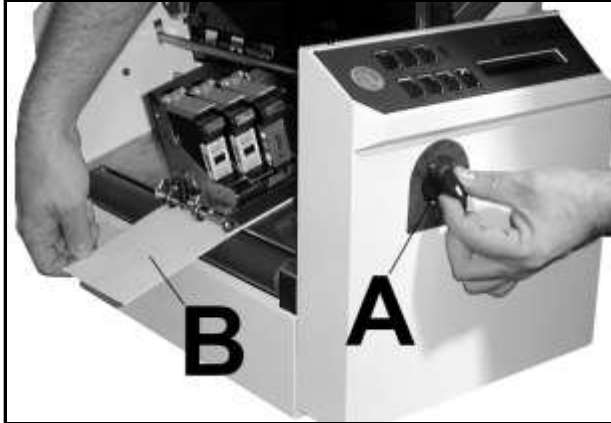
Adjust Side Guides:

1. Adjust Side Guides to within 1/32" from sides of media. Tighten Side Guide locking screws.



Adjust Rear Guide:

1. Loosen locking screw and position so media is raised about 1/2" above Feed Table.
2. Turn Media Thickness Knob [A] fully counterclockwise. Place media [B] under Printhead Carriage.



3. Adjust Media Thickness Knob clockwise until Printhead Carriage just touches media.
4. Turn Media Thickness Knob counterclockwise until media [B] can be removed with a slight pull.

Test Feed Media:

1. Press **ON LINE** key, then **ENTER**.
Press **ENTER** again to stop feeding.
Press **ON LINE** to stop Printer.



Step 6

Install Print Driver

Load "Printer Drivers" CD into computer's CD/DVD drive.

If "Drive Installation CD" launch window appears, ignore it.

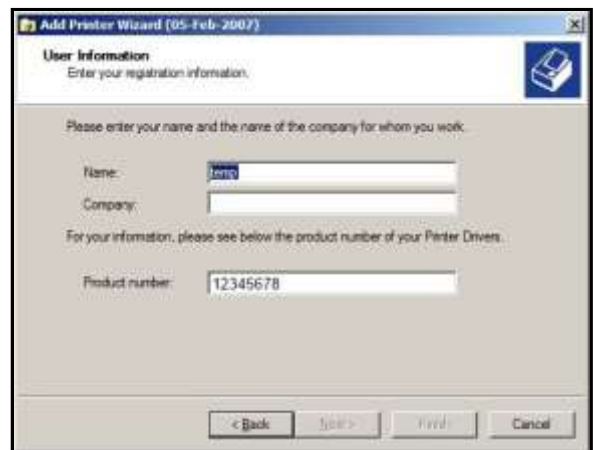


DO NOT TURN PRINTER POWER ON YET

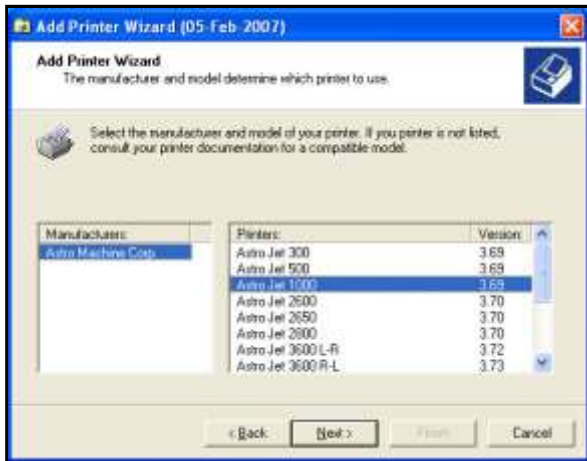
1. With Printer connected to computer via USB or parallel port, turn Printer **ON**. "Welcome to the Add Printer Wizard" screen opens. Click **Next**>.



2. "User Information" screen. Type in your company and name. Click **Next**>.



3. Select your Printer Model from list displayed. Click **Next>**.



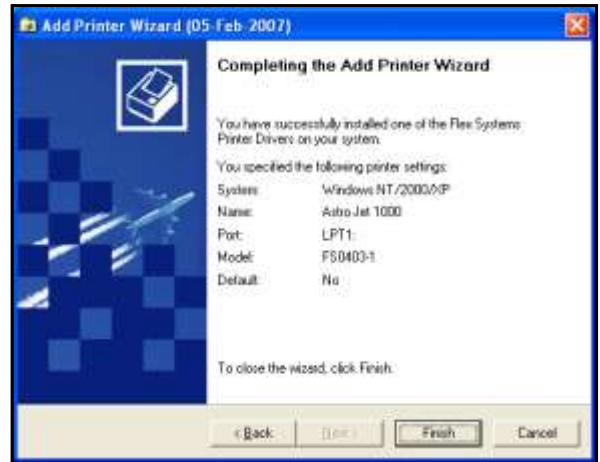
4. “**Select the Printer Port**” screen. Select LPT1 for parallel cable connection or USB for USB connection. Click **Next>**.



5. “**Name Your Printer**” screen. Unless another printer of same name is on system or network you can ignore this step. (You can also make this Printer the default printer.) Click **Next>**.



6. “**Completing the Add Printer Wizard**” window. Click **Finish** to complete Installation. Installation is complete when “**Found New Hardware**” box appears in lower right-hand corner of screen.



Step 7

To install Accessories and for Printer set-up or operation, please refer to “**AstroJet 300P-500P Printer Operator Manual**” supplied with Printer.



630 Lively Blvd.
Elk Grove Village, IL 60007
Phone: (847) 364-6363
Fax: (847) 364 9898
www.astromachine.com