



# AstroJet 3600P-3800P Quick Start Guide



## Step 1

### Unpack Printer and Accessories

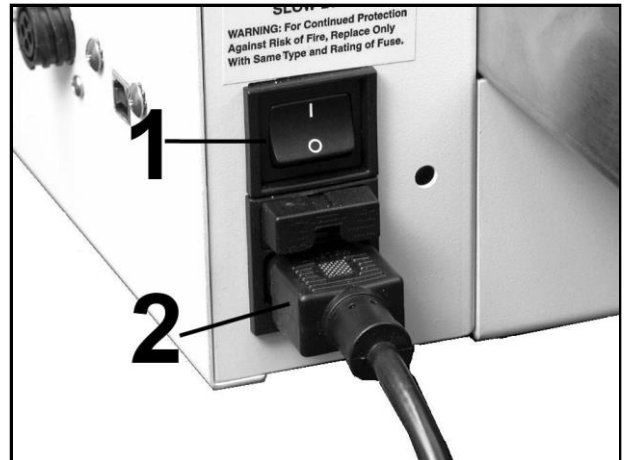
Place Printer on a stable surface. Save packaging material.

## Step 2

### Connect Power to Printer

1. Main power switch [1] is turned OFF.
2. Plug power cord to Printer receptacle [2].
3. Plug other end into 115-220 Volt AC, 50/60 Hz. grounded outlet.

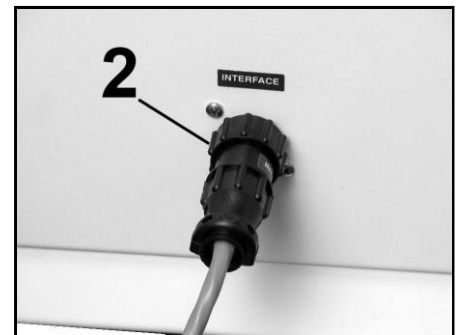
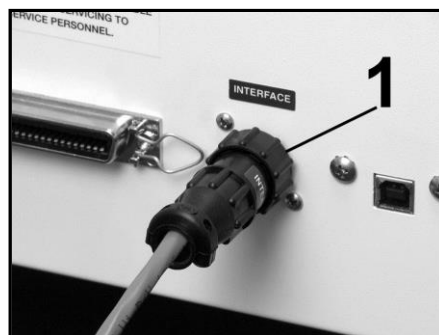
**DO NOT TURN POWER SWITCH ON YET**



## Step 3

### Connect Optional Feeder to Printer (or skip to Step 4)

Attach Printer/Feeder Communication Cable to Printer [1] and Feeder [2]. Remove jumper plug from Printer (if installed) to attach Printer/Feeder Communication Cable.

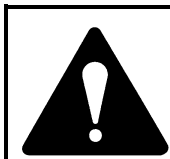
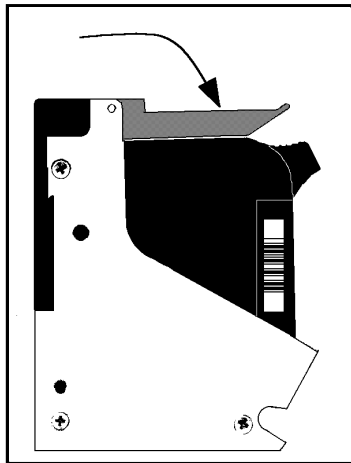
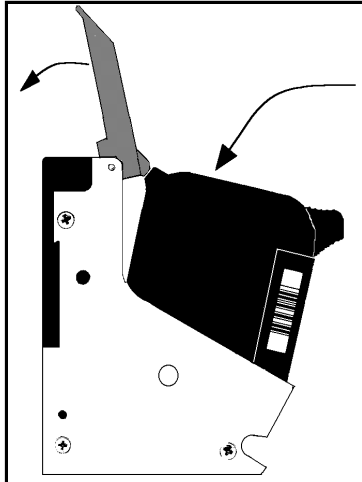


# Step 4

## Install Inkjet Cartridges

**3600P** has 6 printheads.  
**3800P** has 8 printheads.

1. Remove inkjet cartridge from packaging. **DO NOT** touch copper contacts, metal plate, or gold printhead. Remove protective tape from printhead.
2. Open latch levers on inkjet cartridge holders.
3. With cartridge's printhead pointing down, slide cartridge into holder, push down and toward contacts in holder.
4. Make sure cartridge is seated in holder. Close latch lever to secure cartridge in holder. **DO NOT force lever into place.**
5. Repeat **Steps 1-4** for remaining cartridges.



**Ink in cartridge may be harmful if swallowed. Keep new and used cartridges out of reach of children. Discard empty cartridges immediately.**

# Step 5

## Connect Printer to Computer

Printer has both USB and Parallel Ports.  
(Located on Side Cover as shown.)

**USB Cable Users:** Plug USB cable from computer into Printer's USB port.



**Parallel Cable Users:** Plug Parallel Printer Cable from computer into Printer's Parallel Port.  
Latch two locking clips.



# Step 6

## Install Print Driver

Load "Printer Drivers" CD into computer's CD/DVD drive. If "Drive Installation CD" launch window appears, you can ignore it.

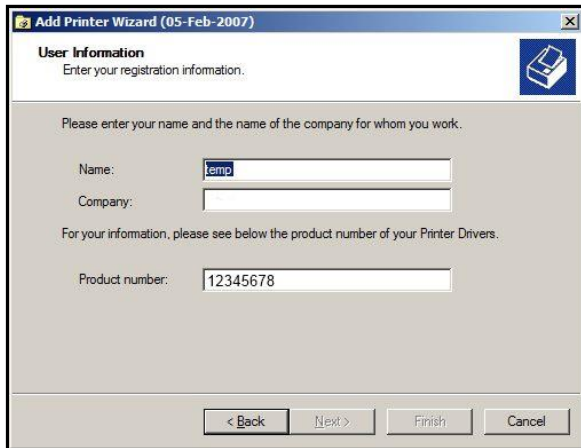


**DO NOT TURN PRINTER POWER ON YET**

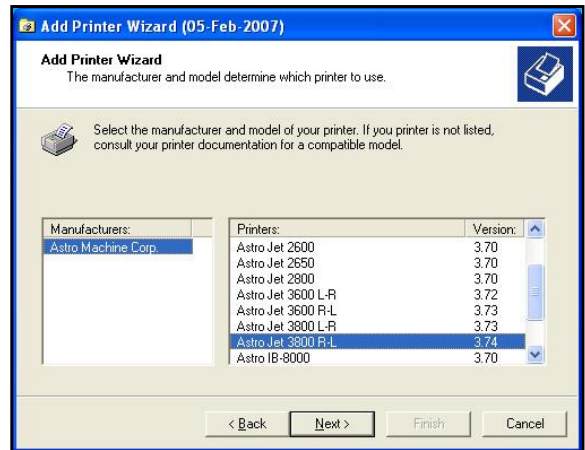
1. With Printer connected to computer via USB or parallel port, turn Printer **ON**. "Welcome to the Add New Printer Wizard" opens. Click **Next>**.



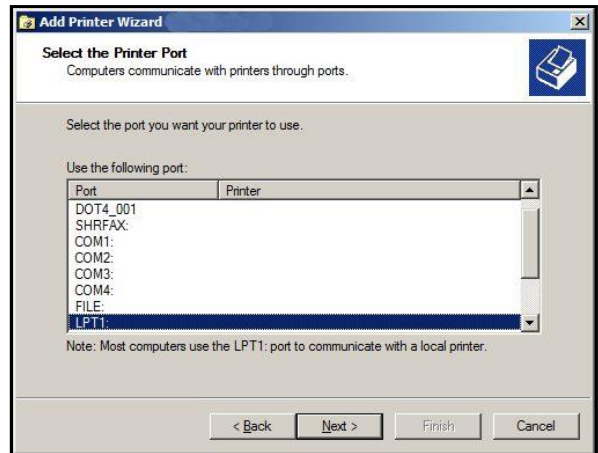
2. "User Information" screen. Type in your company and name. Click **Next>**.



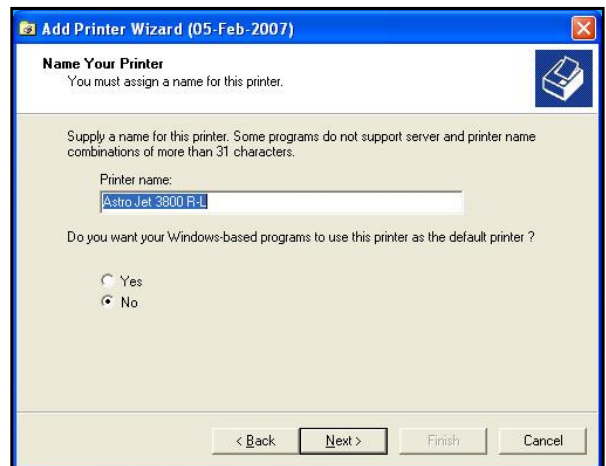
3. Select your Printer Model from list displayed. Click **Next>**.



4. **Select Printer Port:** LPT1 for parallel cable connection or USB for USB connection. Click **Next>**.



5. "Name your Printer" screen. Unless another Printer of same name is on your system or network you can ignore this step. (You can also choose to make this Printer the default printer.) Click **Next>**.



6. **“Completing the Add Printer Wizard”** window. Click **Finish** to complete installation. Installation is complete when **“Found New Hardware”** box appears in lower right-hand corner of screen.



## Step 7

To install Accessories and for Printer set-up or operation, please refer to **“AstroJet 3600P-3800P Printer Operator Manual”** supplied with Printer.



630 Lively Blvd.  
Elk Grove Village, IL 60007  
Phone: (847) 364-6363  
Fax: (847) 364 9898  
[www.astromachine.com](http://www.astromachine.com)