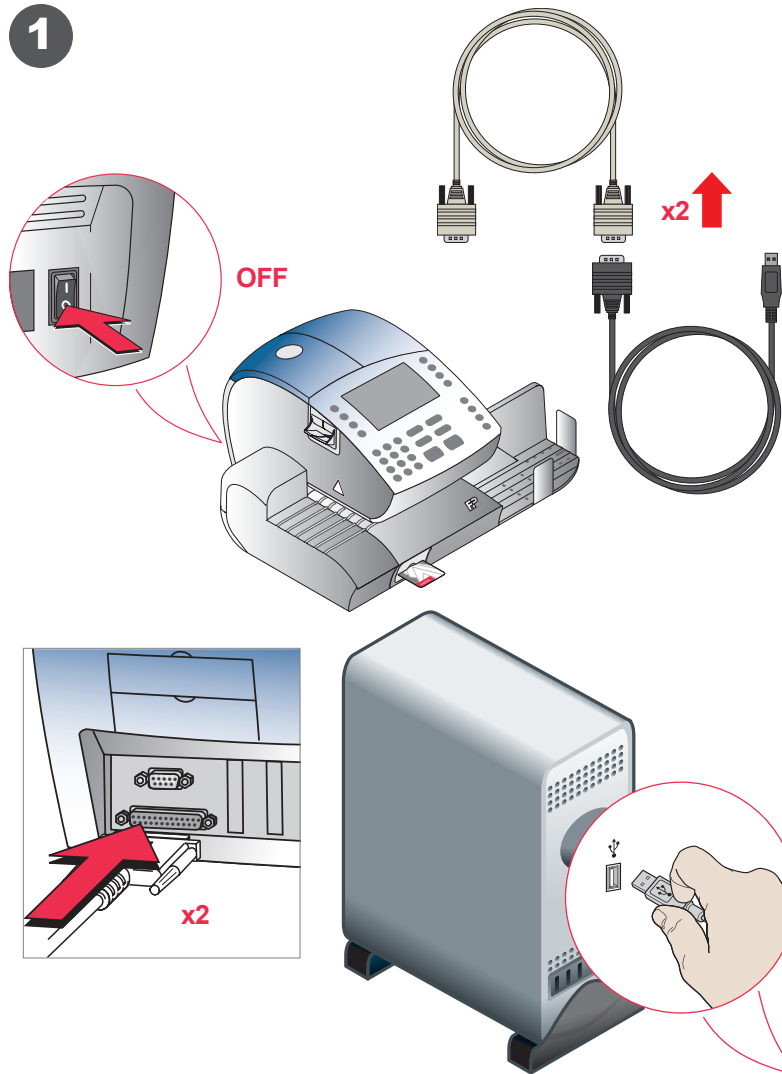




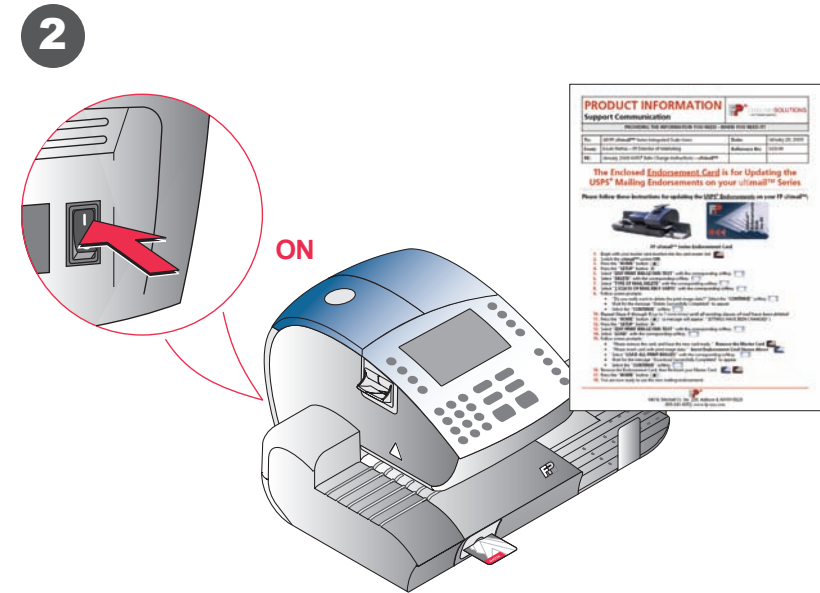
mailone™ Set-Up and Installation Guide

Checking the contents of the package

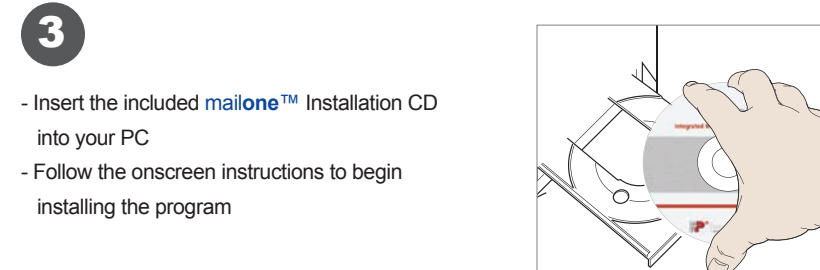
- | | |
|--|---|
| 1 – mailone™ Installation CD | 5 – Endorsement Card |
| 2 – mailone™ Activation Code (if ordered) | 6 – Endorsement Card Instructions |
| 3 – 2-USB/Serial Converters | 7 – Interfaced excelscale™ (optional) |
| 4 – 2-9 Pin Serial Cables | 8 – excelscale™ Cable (optional) |



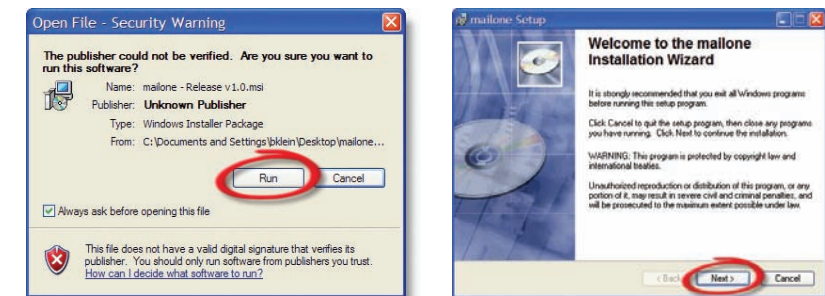
- Make sure that the **ultimail™/centormail™** is updated with the most recent version of Firmware (Dealer-Installed)
- Start by turning the power OFF on your mailing machine
- Connect the USB Converters to the provided Serial Cables as shown
- Connect both of the Serial Cables to the mailing machine as shown
- Connect both of the USB Converters to your PC as shown



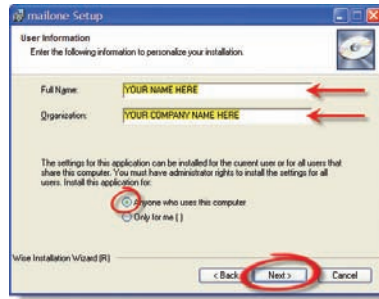
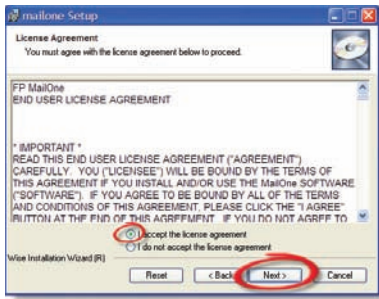
- Restart by powering ON your mailing machine
- Refer to the included instructions to update the endorsements on the mailing machine
- Once the ALL Endorsements are loaded, put the meter into KARAT (PC Accounting Mode) as indicated in the Meter's Operator Manual



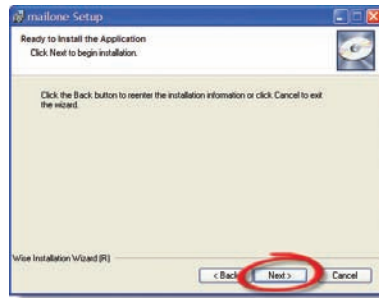
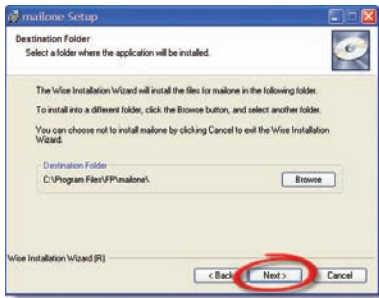
- Insert the included **mailone™** Installation CD into your PC
- Follow the onscreen instructions to begin installing the program



4

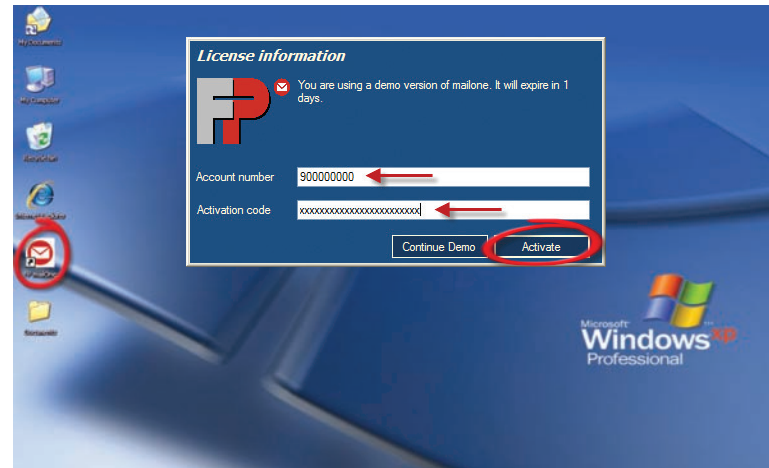


- Review and Accept the EULA, then select 'Next' as shown
- Enter the PC Name and Company Name as shown, then select 'Next'

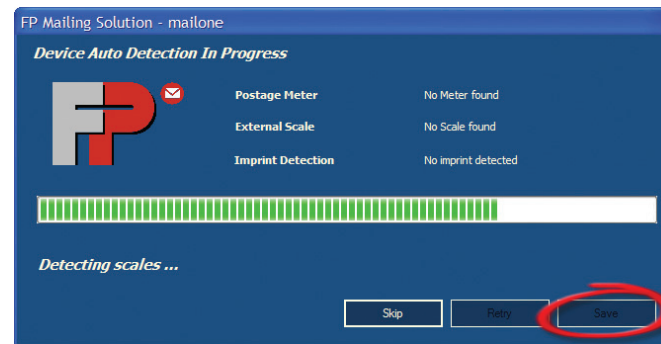


- If mailone™ prompts you to install Microsoft Access 2007 Runtime, you must accept the additional Microsoft License Agreement and install the application for mailone™ to function properly

5



- Once the installation has finished, open mailone™ by double clicking the desktop icon as shown
- The software will now prompt you for your license information – if you have your FP 9-digit Account Number AND your mailone™ 24-digit alpha-numeric License Activation Code, enter it as shown
- Otherwise, click 'Continue Demo' to continue with the Free Trial



- If you have connected your PC and Meter correctly, mailone™ will automatically detect the postage meter & external scale (optional)
- Once detected, mailone™ will automatically set your meter to \$0.00 and prompt you to 'Generate a Zero Imprint' – to do this, simply feed a letter or label through your meter
- Once complete, mailone™ will confirm the COM port connections
- To end the Auto-Detection process, click the 'SAVE' button

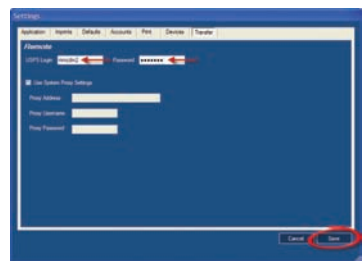
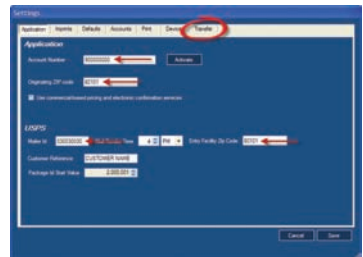
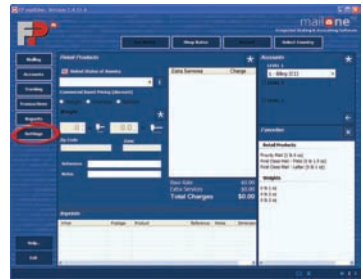
6

- From the mail processing screen, click the 'Settings' tab as shown
- Enter your 9-Digit FP Account Number & originating ZIP Code as shown
- In order to process Electronic Confirmation Services, you will need to enter your USPS® Mailer ID & Entry Facility ZIP Code as shown

NOTE: If you do not wish to utilize the Electronic Confirmation Services, you must still input a 'dummy' Mailer ID number of 11111111 (9-digits) in order to utilize the Commercial-Base Pricing Discounts

- Click the 'Transfer' tab at the top as shown
- Enter your USPS®-assigned Confirmation Services Login code & Password, then click the 'SAVE' button as shown

NOTE: If you do not wish to utilize the Electronic Confirmation Services, you must still input a 'dummy' USPS® Login of 111111 (6-digits) and a 'dummy' password of 111111 (7-digits) in order to utilize the Commercial-Base Pricing Discounts



7

Congratulations!

You have now successfully installed mailone™

- Please click on the 'Help' button located in the lower-left corner of the mail processing screen to learn about the features and functions of your new mailone™ software
- To order supplies, contact your local Dealer or visit us on the web @ www.fp-usa.com

